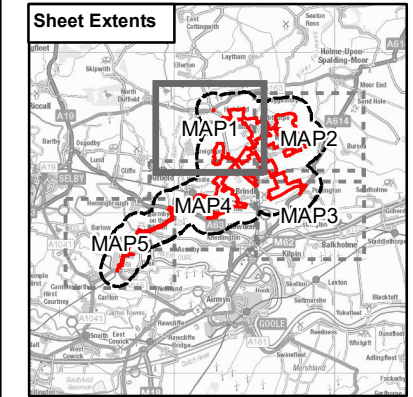


LEGEND

- Order limits
- Land not included in the Order limits
- 1km Buffer of the Order limits

HER Monument Data

- Point
- Line
- Polygon



NOTES

Reproduced from Ordnance Survey digital map data © Crown copyright 2023. All rights reserved. Licence number 0100031673. Contains Ordnance Survey Data © Crown Copyright and database right 2023. © NYCC and English Heritage. © North Yorkshire County Council. All archaeological mapping should be regarded as indicative, not definitive. All information is copyright of Humber Archaeology Partnership 2023

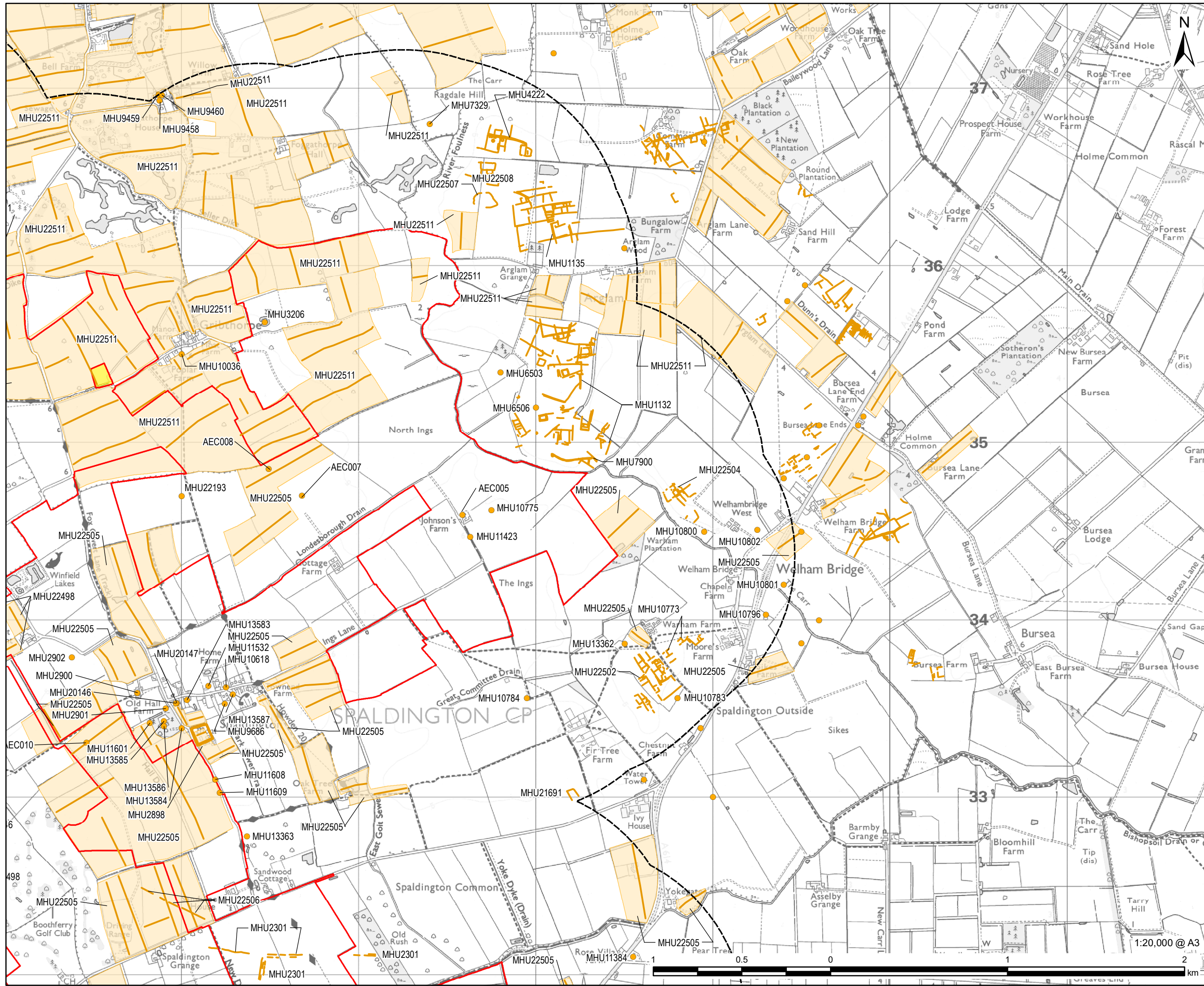
ISSUE PURPOSE
Environmental Statement

PROJECT NUMBER
60683115

FIGURE TITLE
Non-Designated Heritage Assets
Page 1 of 5

FIGURE NUMBER
Figure 7-2

The drawing has been prepared for the use of AECOM's client. It may not be used, modified, reproduced or relied upon by third parties, except as agreed by AECOM or as required by law. AECOM accepts no responsibility, and denies any liability whatsoever, to any party that uses or relies on this drawing without AECOM's express written consent. Do not scale this document. All measurements must be obtained from the stated dimensions.

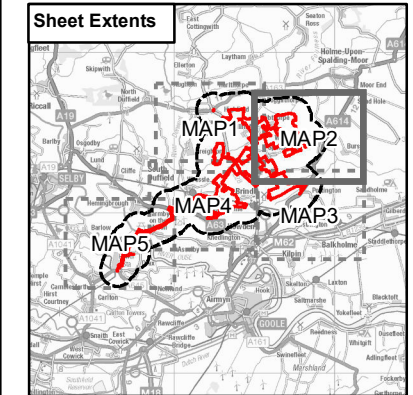


LEGEND

- Order limits
- Land not included in the Order limits
- 1km Buffer of the Order limits

HER Monument Data

- Point
- Line
- Polygon



NOTES

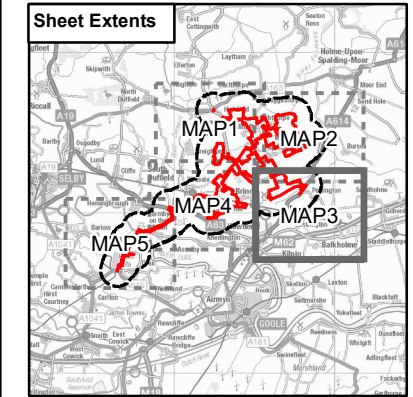
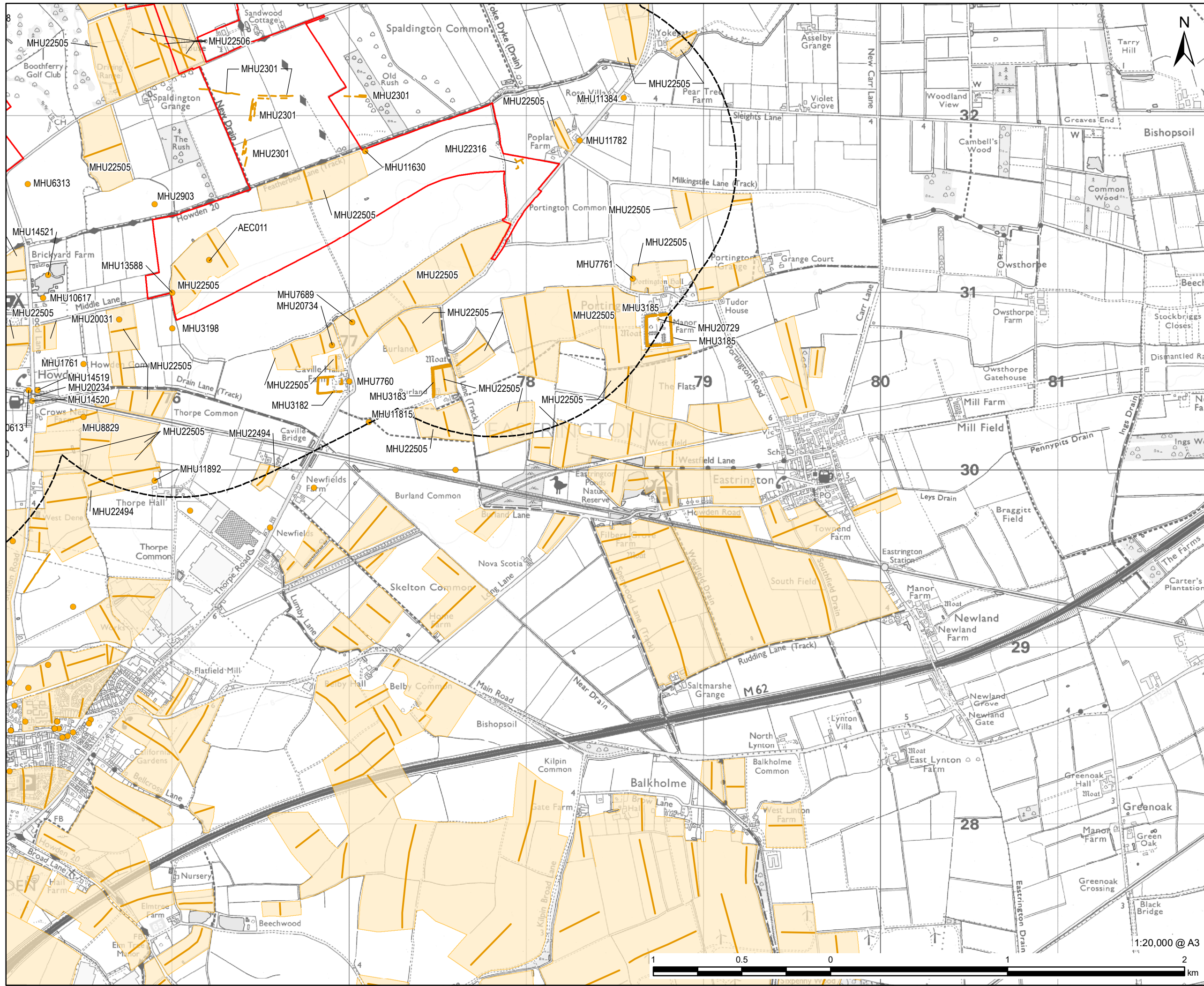
Reproduced from Ordnance Survey digital map data © Crown copyright 2023. All rights reserved. Licence number 0100031673. Contains Ordnance Survey Data © Crown Copyright and database right 2023. © NYCC and English Heritage. © North Yorkshire County Council. All archaeological mapping should be regarded as indicative, not definitive. All information is copyright of Humber Archaeology Partnership 2023

ISSUE PURPOSE
Environmental Statement

PROJECT NUMBER
60683115

FIGURE TITLE
Non-Designated Heritage Assets
Page 2 of 5

FIGURE NUMBER
Figure 7-2



NOTES

Reproduced from Ordnance Survey digital map data © Crown copyright 2023. All rights reserved. Licence number 0100031673. Contains Ordnance Survey Data © Crown Copyright and database right 2023. © NYCC and English Heritage. © North Yorkshire County Council. All archaeological mapping should be regarded as indicative, not definitive. All information is copyright of Humber Archaeology Partnership 2023

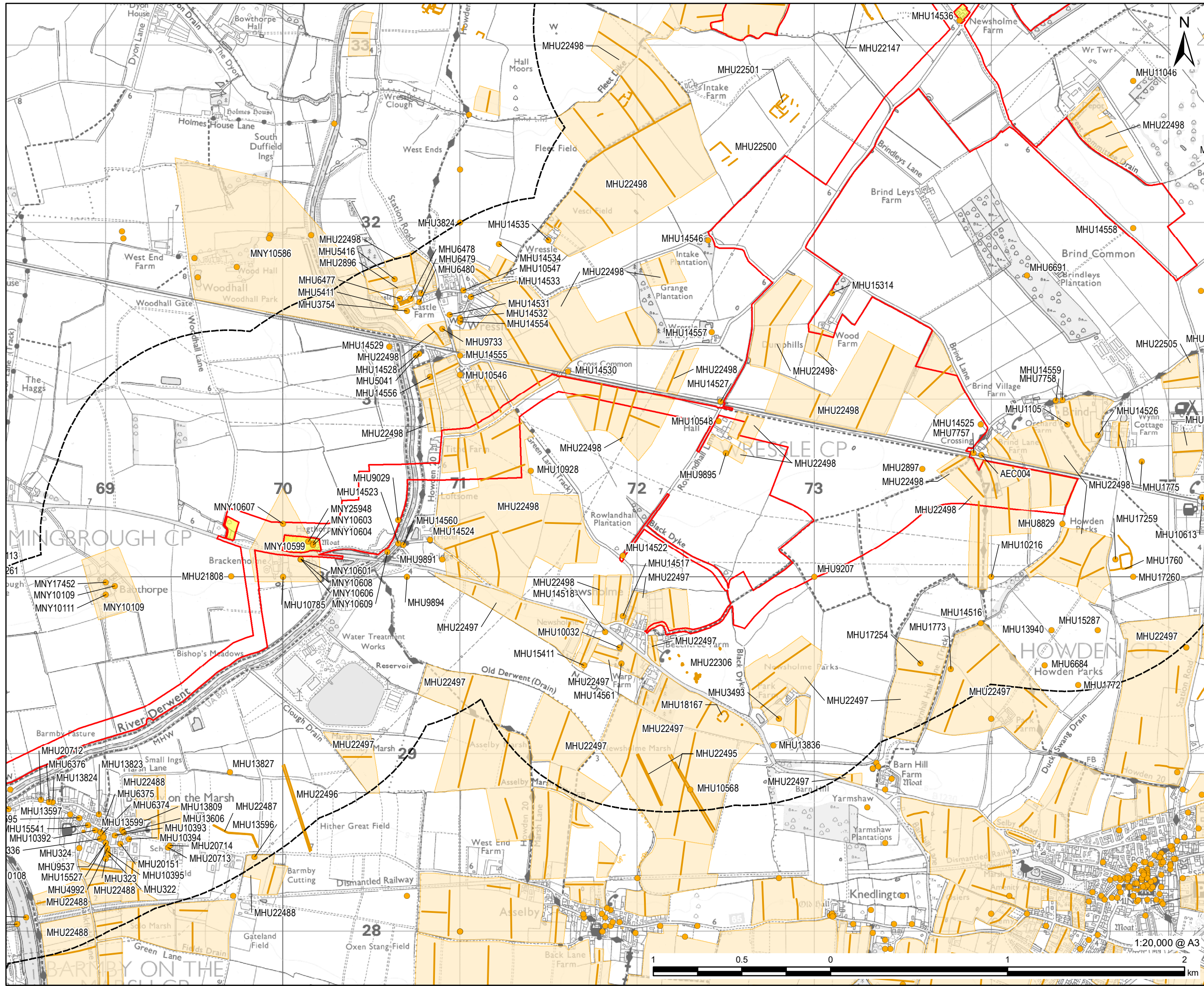
ISSUE PURPOSE
Environmental Statement

PROJECT NUMBER
60683115

FIGURE TITLE
Non-Designated Heritage Assets
Page 3 of 5

FIGURE NUMBER
Figure 7-2

The drawing has been prepared for the use of AECOM's client. It may not be used, modified, reproduced or relied upon by third parties, except as agreed by AECOM or as required by law. AECOM accepts no responsibility, and denies any liability whatsoever, to any party that uses or relies on this drawing without AECOM's express written consent. Do not scale this document. All measurements must be obtained from the stated dimensions.

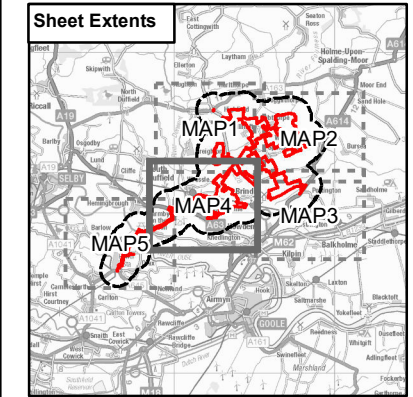


LEGEND

- Order limits
- Land not included in the Order limits
- 1km Buffer of the Order limits

HER Monument Data

- Point
- Line
- Polygon



NOTES

Reproduced from Ordnance Survey digital map data © Crown copyright 2023. All rights reserved. Licence number 0100031673. Contains Ordnance Survey Data © Crown Copyright and database right 2023. © NYCC and English Heritage. © North Yorkshire County Council. All archaeological mapping should be regarded as indicative, not definitive. All information is copyright of Humber Archaeology Partnership 2023

ISSUE PURPOSE
Environmental Statement

PROJECT NUMBER
60683115

FIGURE TITLE
Non-Designated Heritage Assets
Page 4 of 5

FIGURE NUMBER
Figure 7-2



The drawing has been prepared for the use of AECOM's client. It may not be used, modified, reproduced or relied upon by third parties, except as agreed by AECOM or as required by law. AECOM accepts no responsibility, and denies any liability whatsoever, to any party that uses or relies on this drawing without AECOM's express written consent. Do not scale this document. All measurements must be obtained from the stated dimensions.

